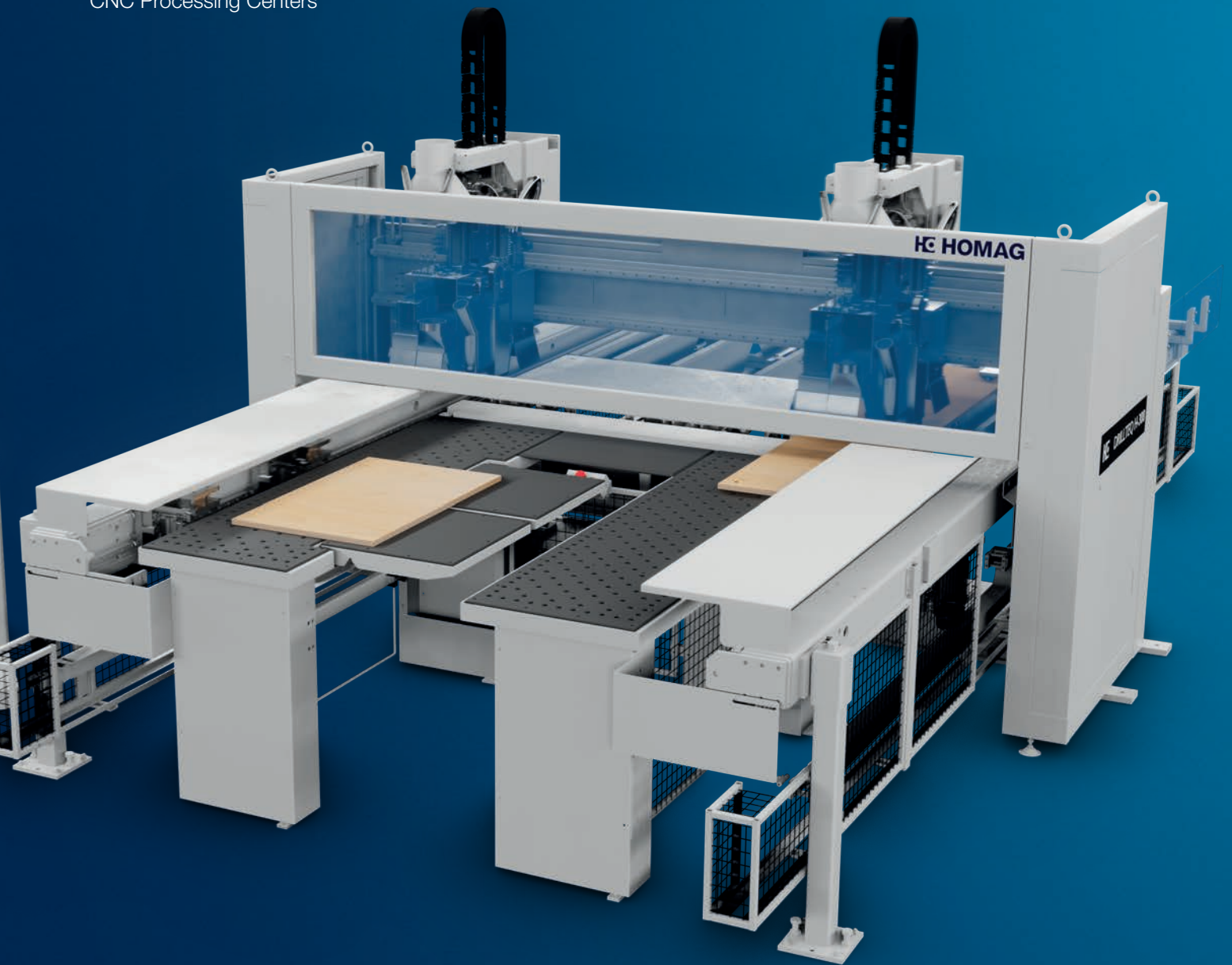


DRILLTEQ H-308

Two in one. 6-sided processing.
CNC Processing Centers





Networked worldwide – HOMAG is always at your side

INDIVIDUAL CUSTOMER WISHES, DEMANDING PRODUCTS AND A WIDE VARIETY OF MATERIALS – the needs of your customers are constantly growing. And this means that the challenges for you and your production grow too. Our aim is to offer you the solutions you need to

accommodate the desire for individuality. To produce flexibly and efficiently and set trends in the industry. We support wood processing businesses of any size on their way to the top. With machines and technologies that grow with you – including the right software solutions and service.



German Headquarter in Schopfloch



Everything from a single source.

HOMAG meets all the requirements and wishes for the machines you have today. Handling systems, panel dividing technology, format and edge processing, drilling systems, sanding technology, spray coating and laminating technology, automation systems and software form a complete and innovative range of products and services. You benefit from a high degree of precision, performance and the right technology to ensure absolute flexibility, which you can use to optimize your entire production capacity.



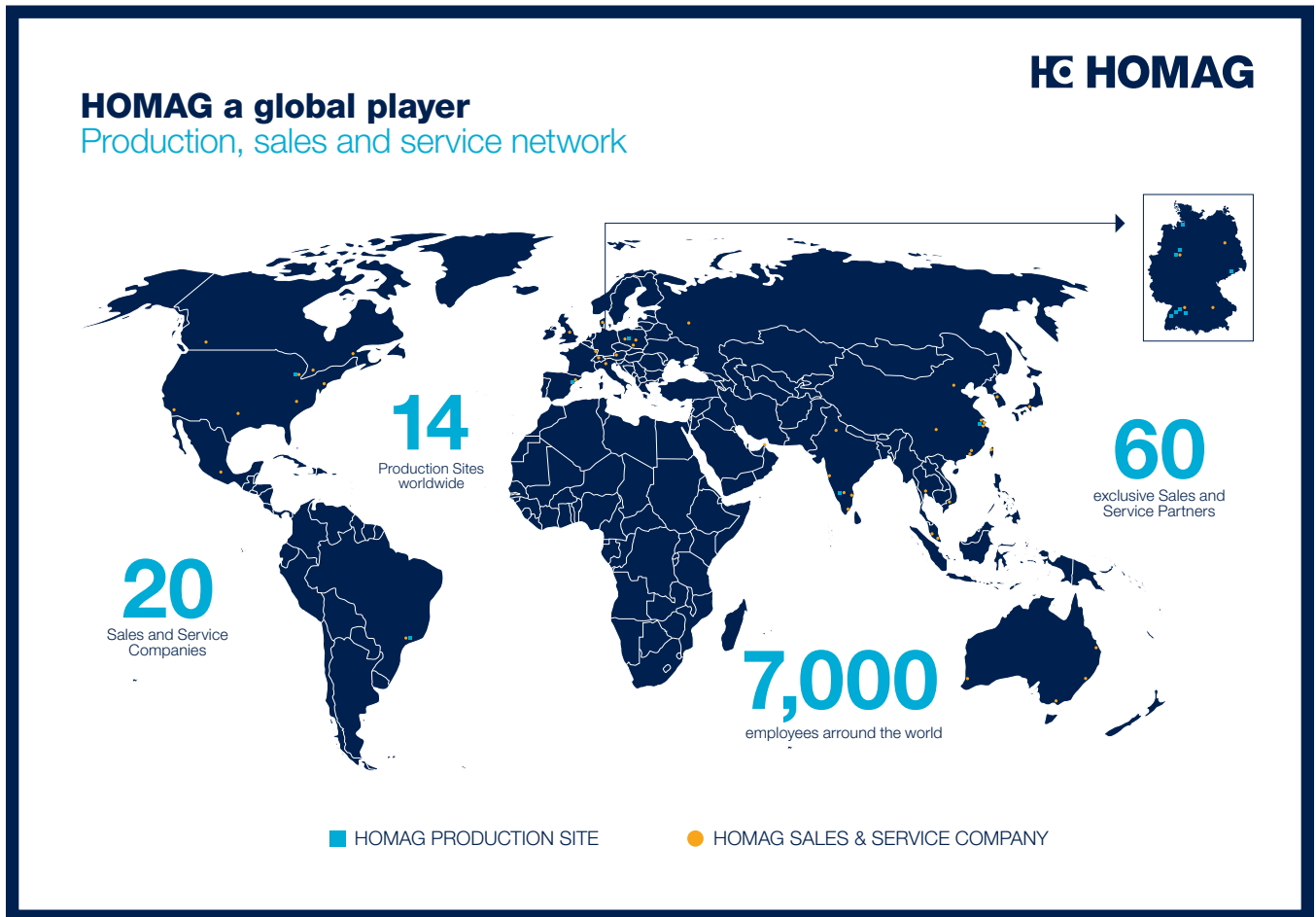
Perfection can be programmed.

The software solutions from HOMAG optimize processes in small and medium-sized enterprises and global industrial manufacturers of furniture. From the first sketch to the final product – our software solutions are perfectly adapted to HOMAG machines. They create efficiency and reliability in the order and production process.

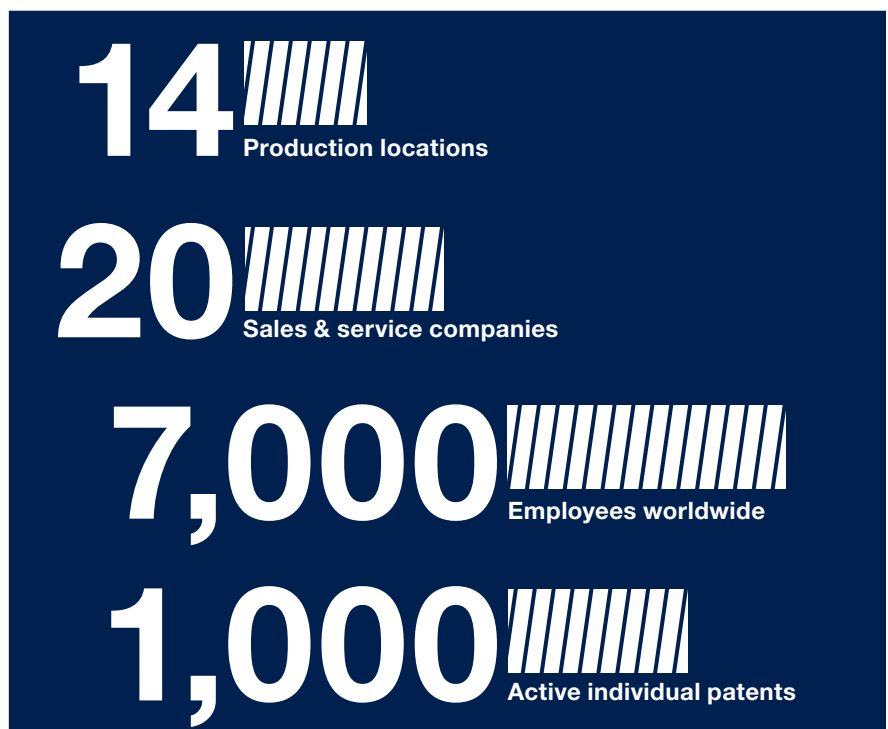


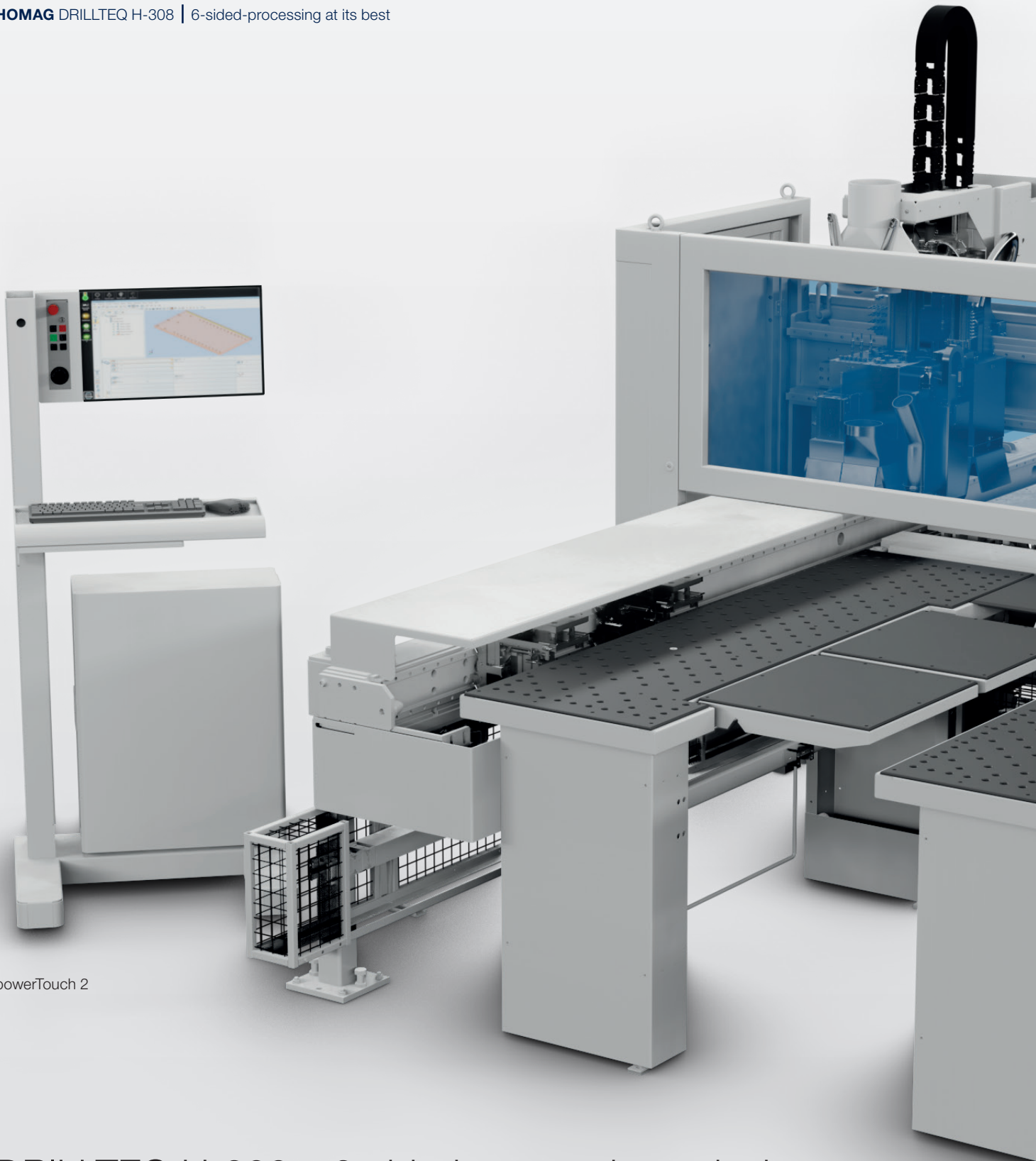
HOMAG Life Cycle Services

The sale of our machines comes with all-in optimum service backup and individual advice. We support you with service innovations and products which are especially tailored to your requirements. With short response times and fast customer solutions we guarantee consistently high availability and economical production – over the entire life cycle of your machine.



International and expert. With sales partners in over 100 countries, HOMAG has a global presence and is able to offer you a strong partnership. We make your company competitive and your business success long-lasting.

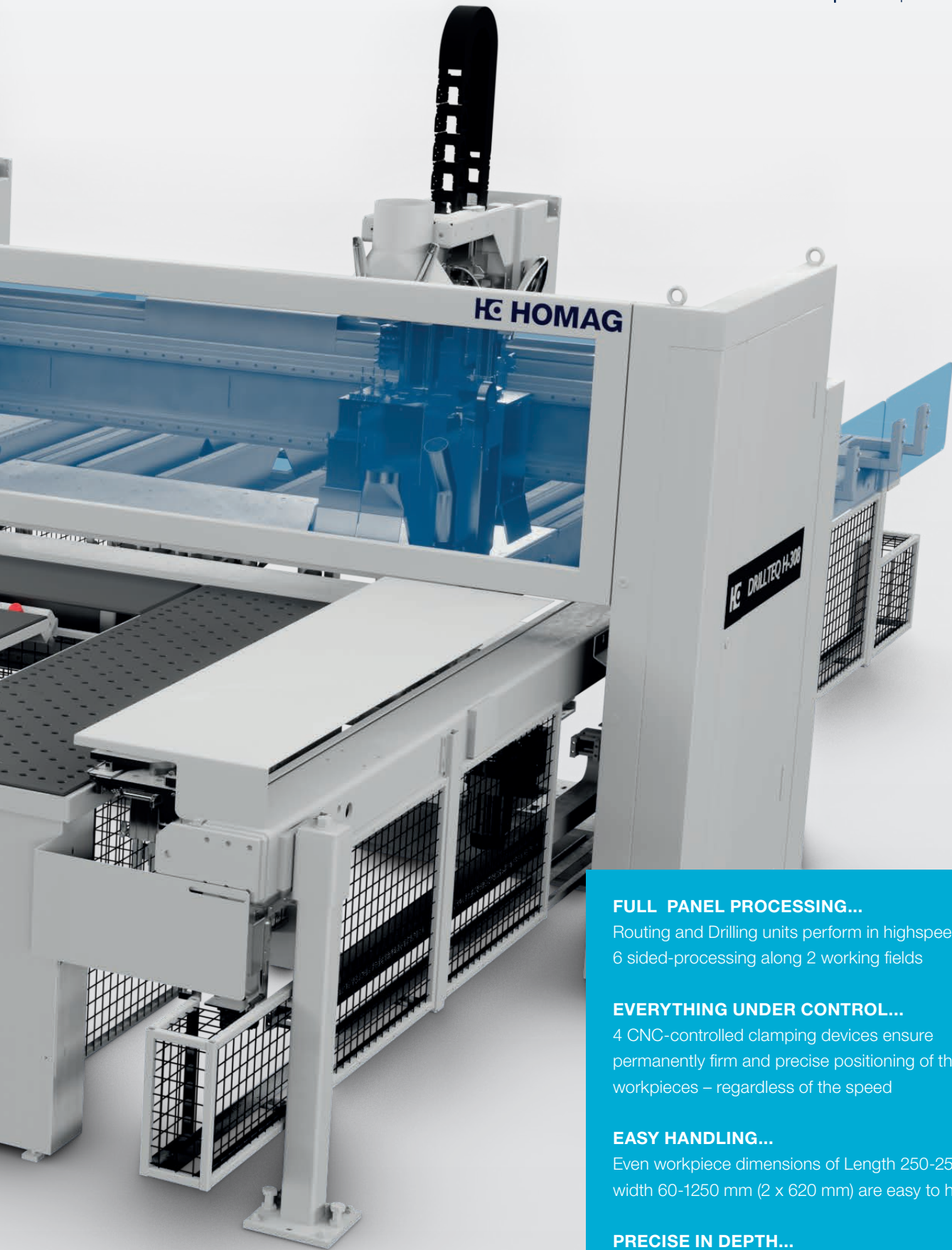




powerTouch 2

DRILLTEQ H-308 – 6-sided-processing at its best

Operation on two working fields for a continuously processing of panels. 64 high-speed drilling spindles and three 3,5 kW routing motors, all in HOMAG Quality, realize precise Processing and a high level of flexibility.



FULL PANEL PROCESSING...

Routing and Drilling units perform in highspeed. 6 sided-processing along 2 working fields

EVERYTHING UNDER CONTROL...

4 CNC-controlled clamping devices ensure permanently firm and precise positioning of the workpieces – regardless of the speed

EASY HANDLING...

Even workpiece dimensions of Length 250-2500 and width 60-1250 mm (2 x 620 mm) are easy to handle

PRECISE IN DEPTH...

The patented spindle clamp ensures an always accurate drilling depth for all drilling

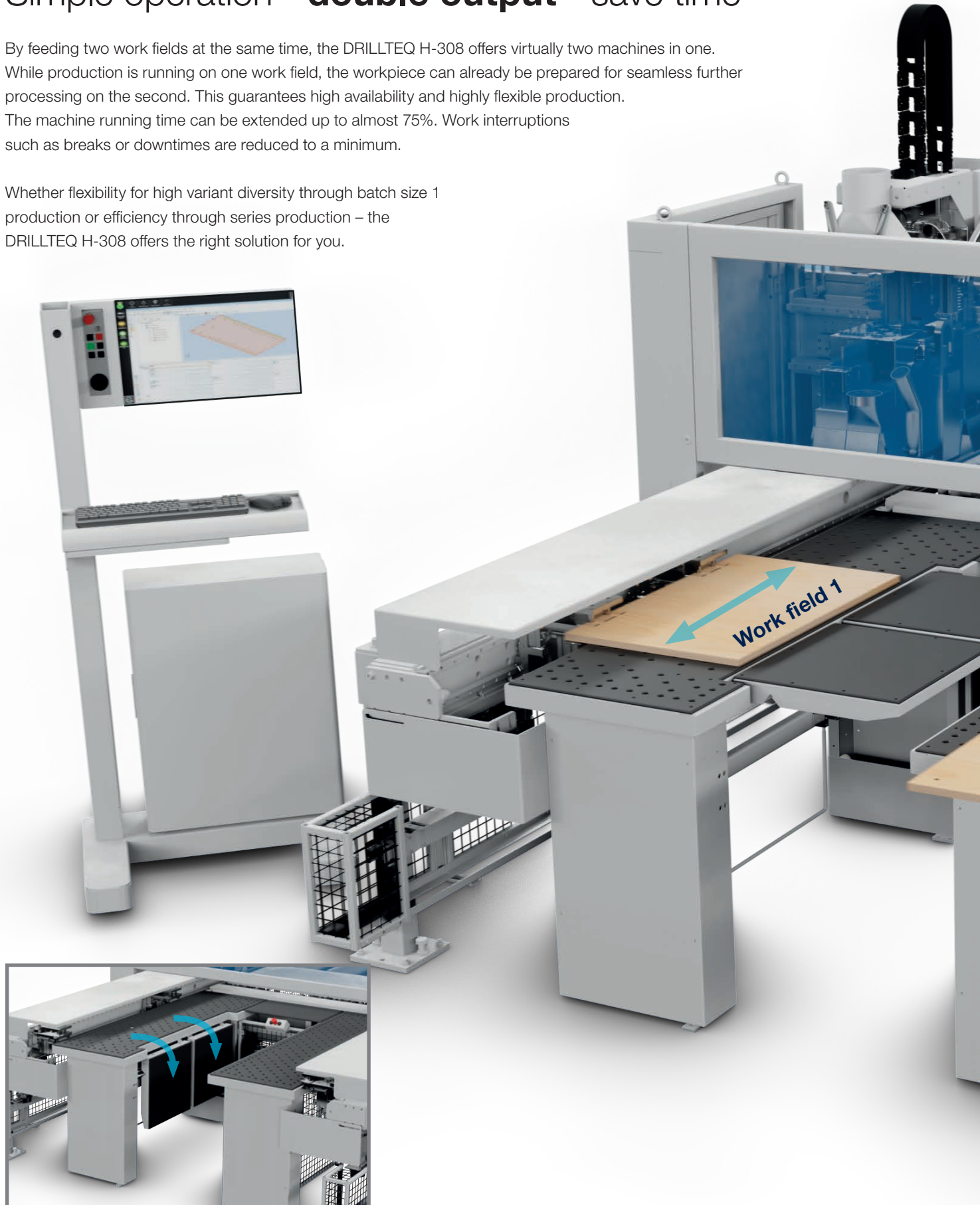
CONSTANTLY AT TOP LEVEL...

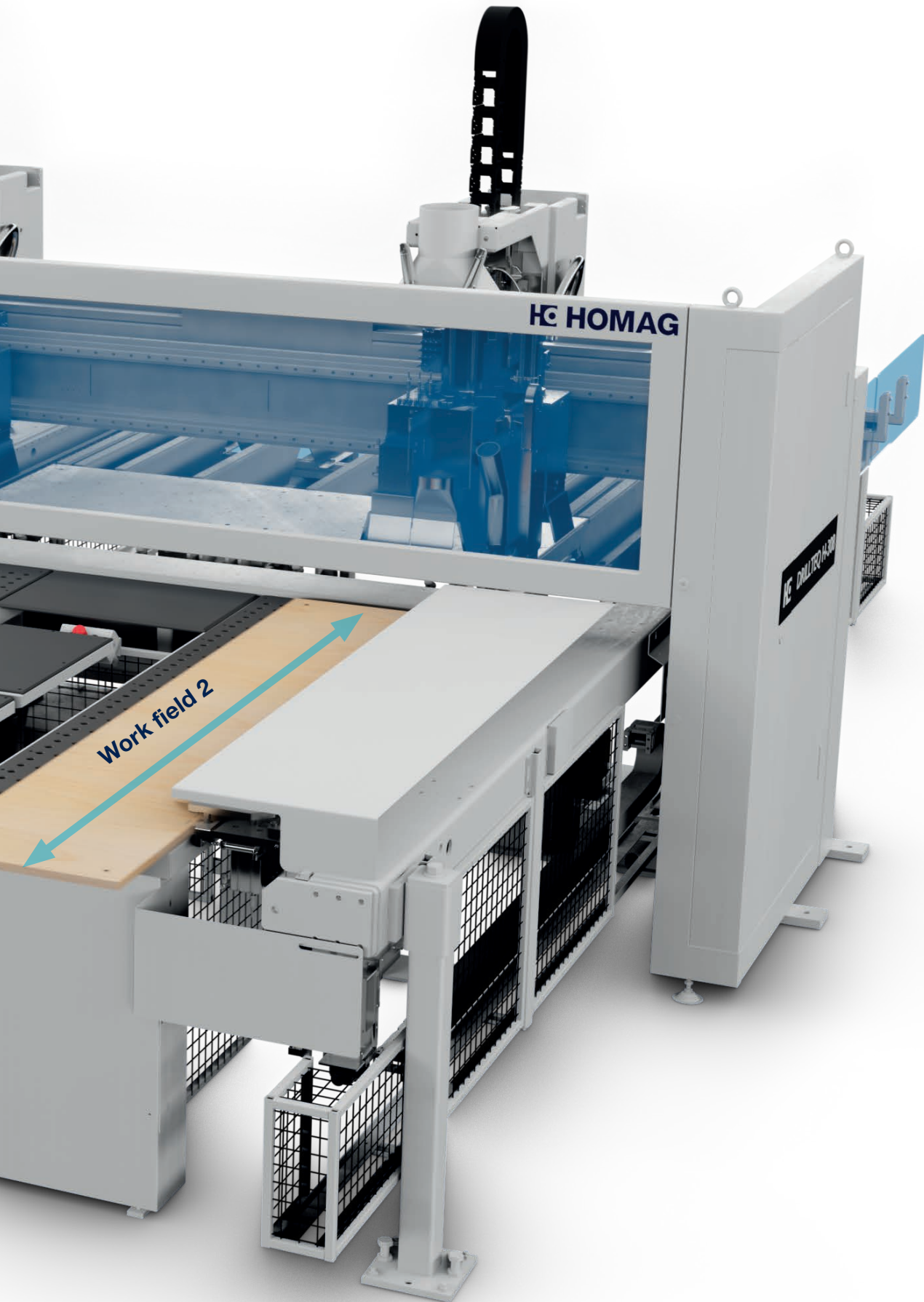
The closed straight guiding system is protected against dust and dirt and thus very durable

Simple operation - **double output** - save time

By feeding two work fields at the same time, the DRILLTEQ H-308 offers virtually two machines in one. While production is running on one work field, the workpiece can already be prepared for seamless further processing on the second. This guarantees high availability and highly flexible production. The machine running time can be extended up to almost 75%. Work interruptions such as breaks or downtimes are reduced to a minimum.

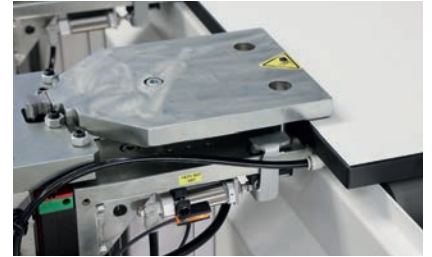
Whether flexibility for high variant diversity through batch size 1 production or efficiency through series production – the DRILLTEQ H-308 offers the right solution for you.





Perfectly matched to you – The right equipment for your needs

CLOSE TO PERFECTION! The configuration variety of the drilling equipment for the DRILLTEQ H-308 provides all possibilities regarding your requirements.

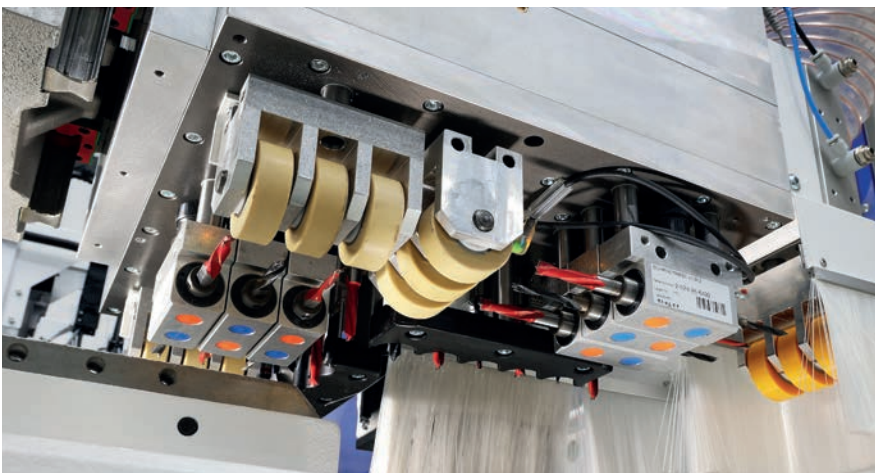
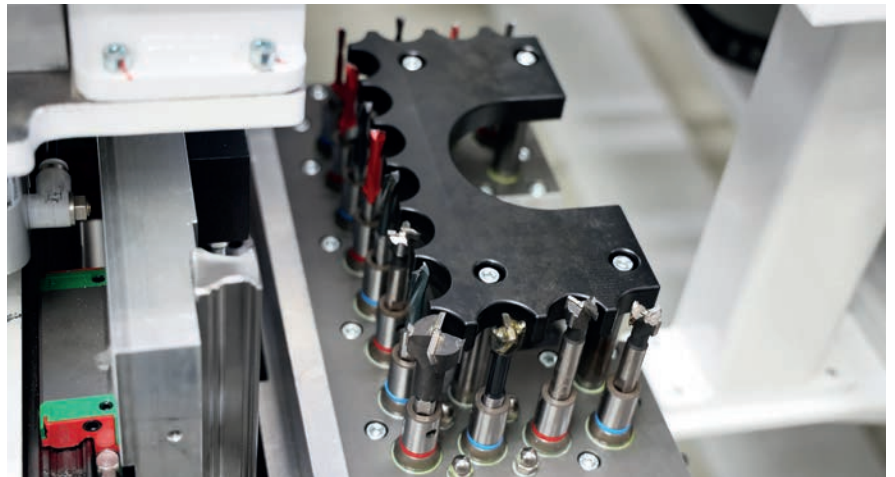


CNC-controlled clamping system on both sides

- Quick and precise – no setting times
- Workpiece thickness up to 40 mm

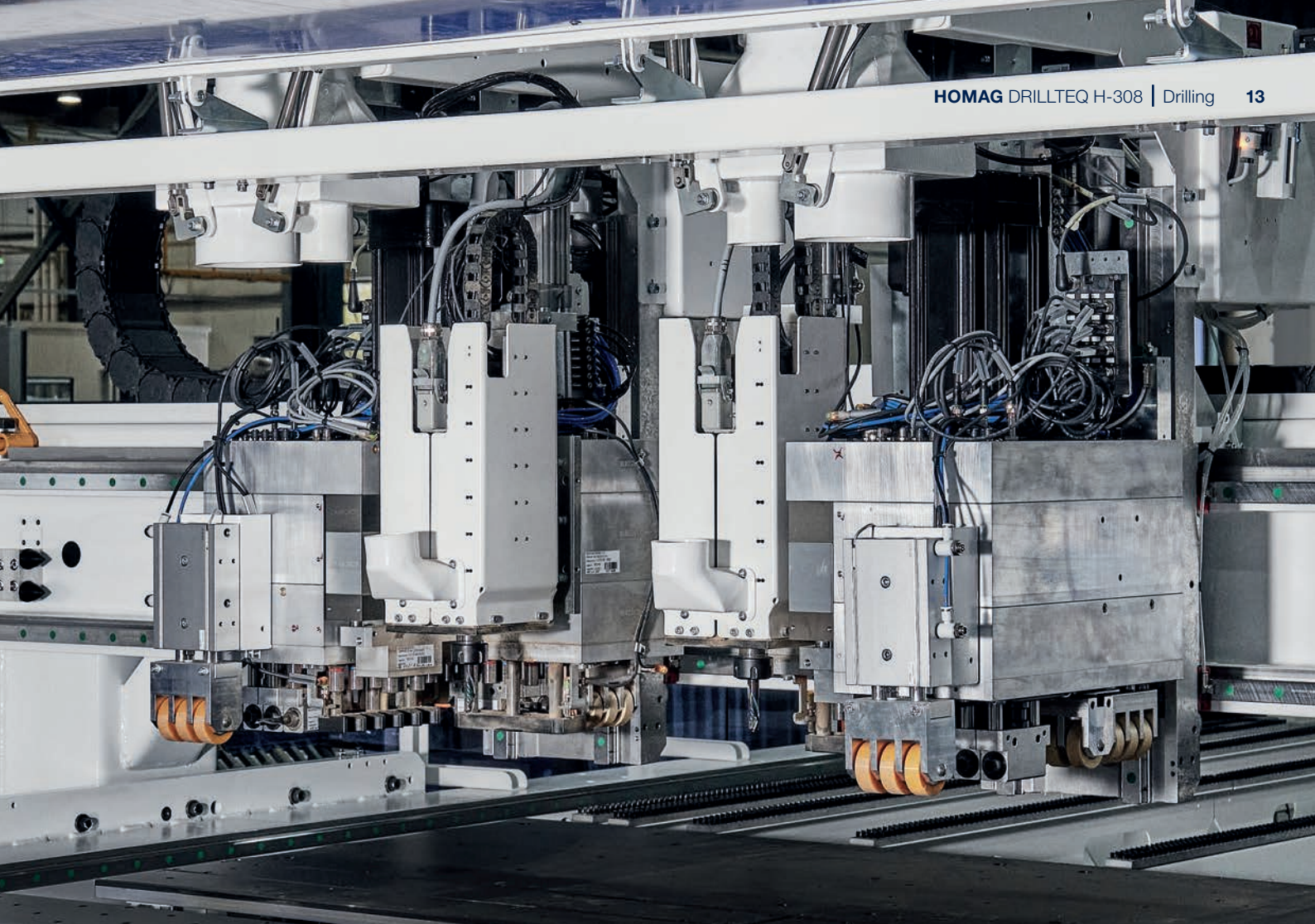
High Speed Processing Unit | Bottom

- V14, Router 3.5KW

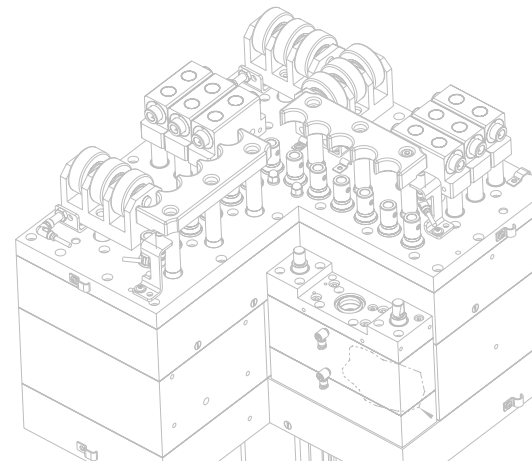
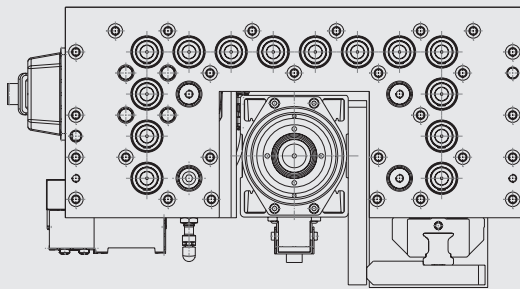


High Speed Processing Unit | Top Head | HighSpeed 7500

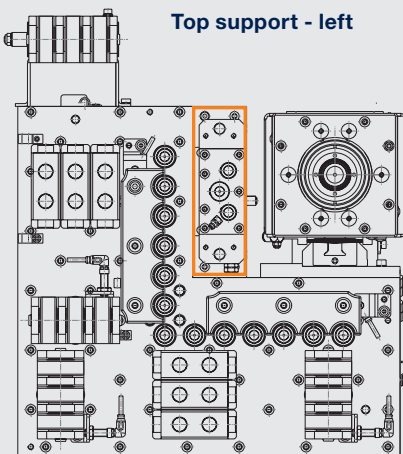
- Left side V13, H6X, H6Y, Router 3.5KW
- Right side V13, H6X, H6Y, Router 3.5KW



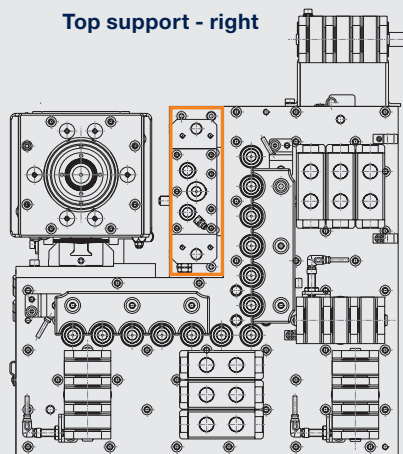
Bottom support



Top support - left



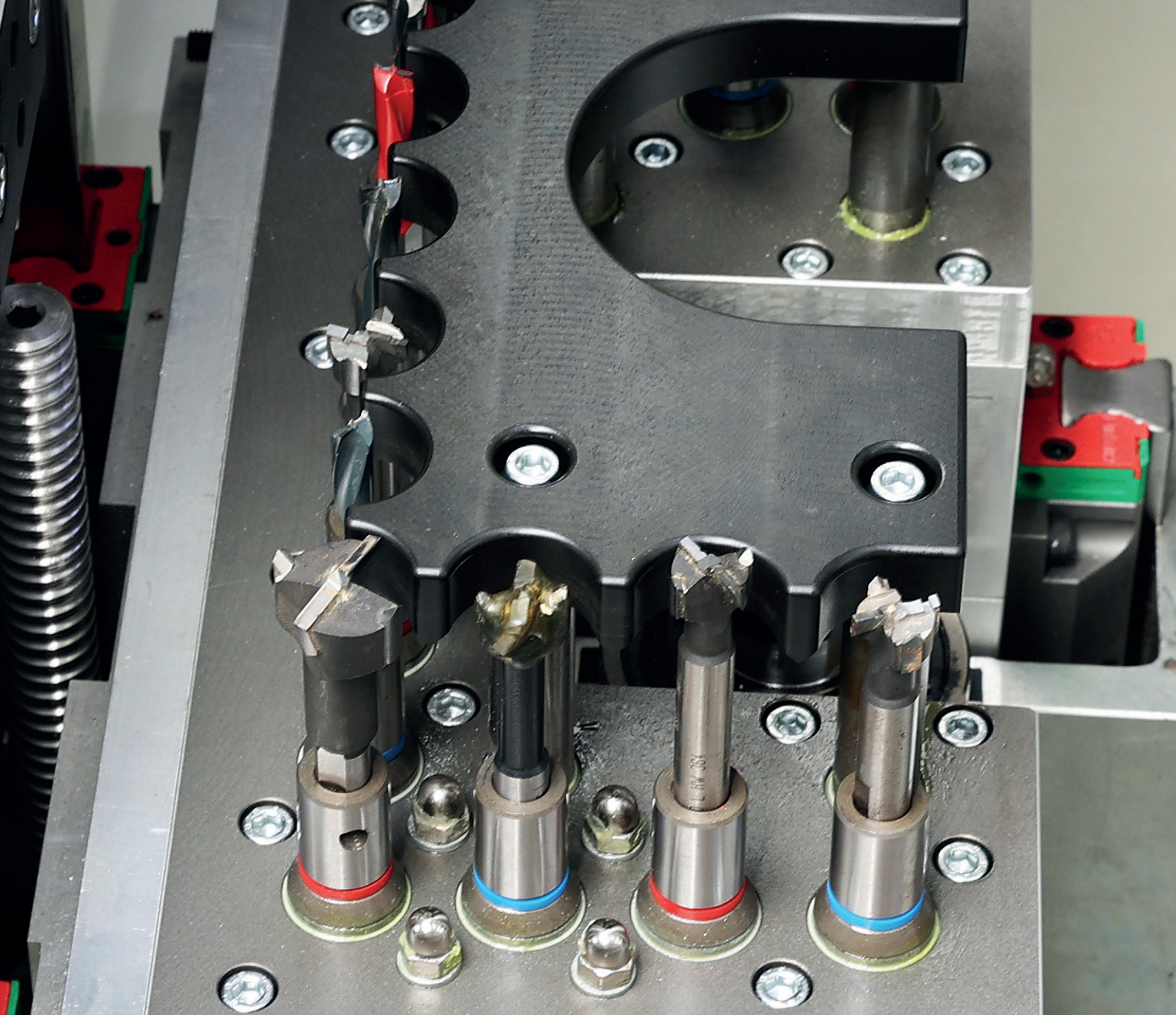
Top support - right



64

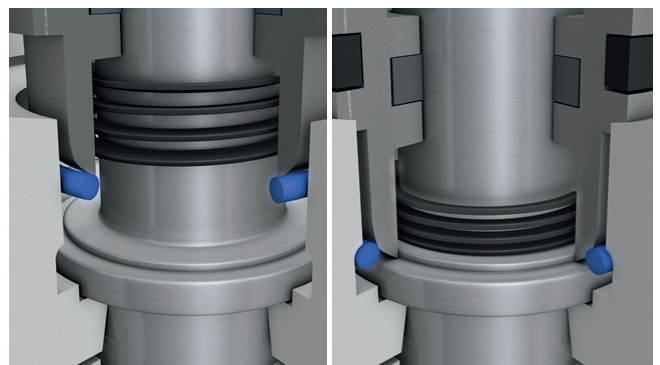
Configuration 64-spindles

- 2 x 13 upper vertical drilling spindles
- 1 x 14 lower vertical drilling spindles
- 2 x 12 horizontal drilling spindles
- 2 x Higer D (optional)
- 3 x 3,5 kW routing spindle



Patented drilling technology – Our experience is your added value

Long service life, low wear and maximum precision. The patented German drilling technology of the HOMAG Group is already included in the DRILLTEQ as standard. It ensures you the highest quality of workmanship in the long term, which does not lose any of its high quality even with thousands of drilling operations per year.

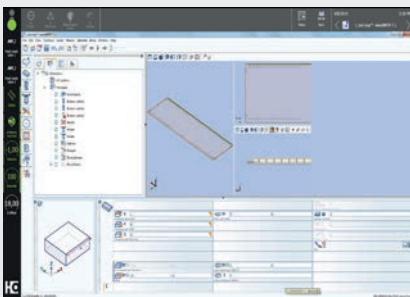


Automatic spindle clamping

- Patented system
- Always exactly the same drilling depth – irrespective
- Constant quality by high repeat accuracy

All inclusive – Software

WITH THIS SOFTWARE PACKAGE YOU ARE »READY TO RACE«. You will receive one of the most established CNC-programming systems, the woodWOP software, which has proven itself by more than 30.000 installations worldwide.



woodWOP | License Machine

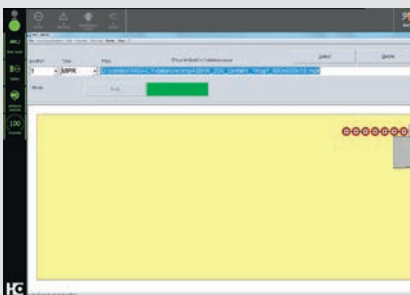
- Fast and intuitive operation thanks to simple, direct navigation
- Quickly create individual subprograms
- Increased programming security through 3D images of workpieces, processing and clamping equipment

Please use our website!
 Worldwide largest forum for woodWOP:
forum.homag.com



PulseCloud ready

Do you need support with Dashboard, Machine management, Tool management or Simple preventive maintenance? We know it and are at your side. MMR Basic provides a direct connection to the PulseCloud. Data is provided at a glance. Your fast support is guaranteed.



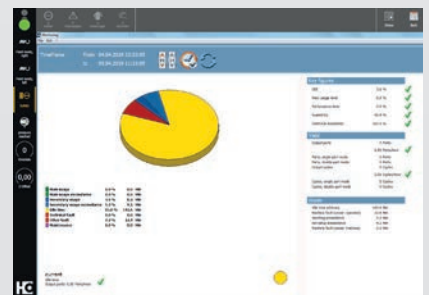
Slot assignment

- Simple control of main machine functions through soft keys
- Graphical configuration
- Automatic mirroring of workpieces



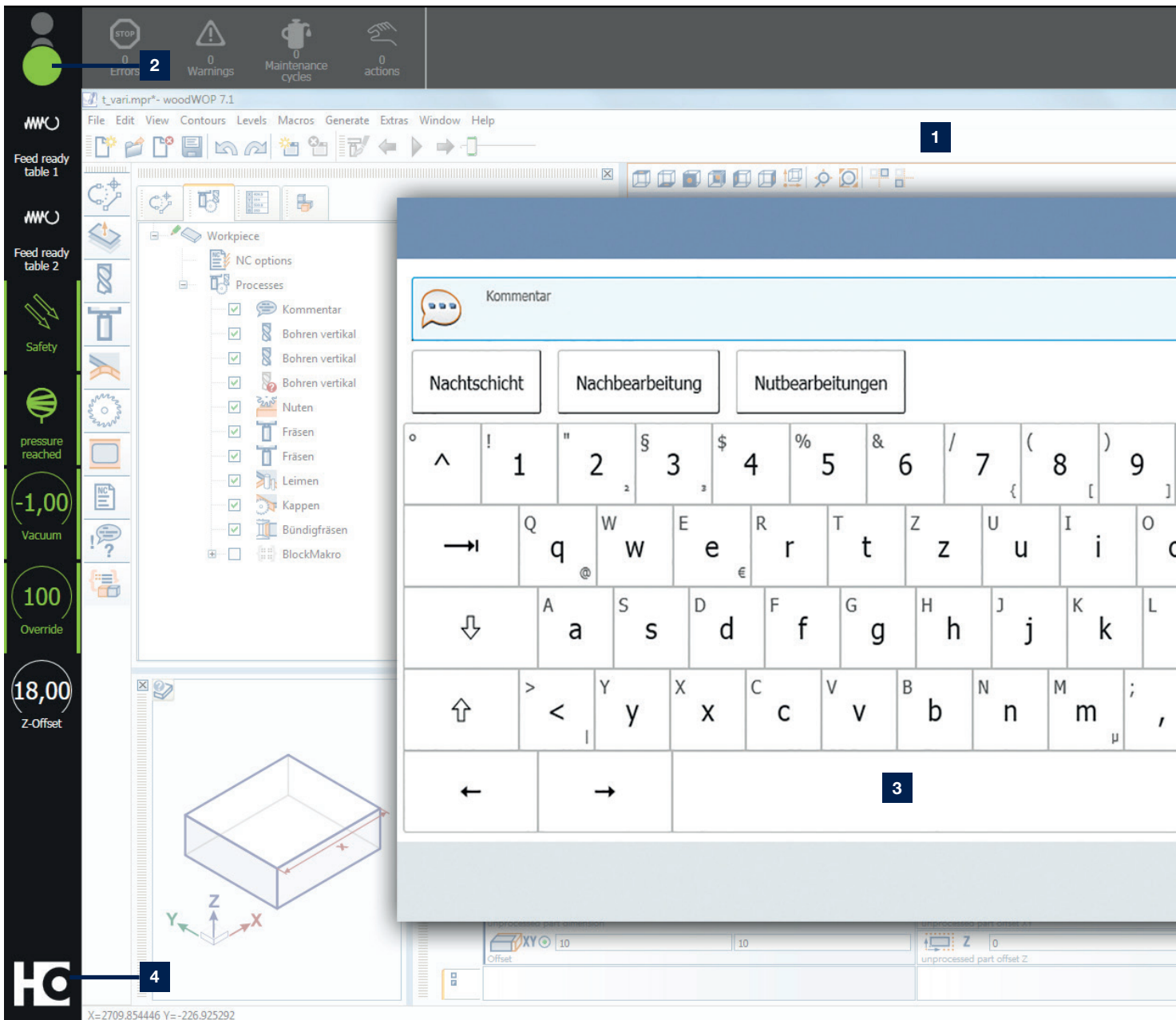
woodWOP DXF Basic

- Interface for CAD-Data Import
- Basis to generate woodWOP programs



Machine data acquisition MMR Basic

- Record quantities and actual operating times on the machine
- Integrated maintenance instructions for optimum time and quantity-based planning, as well as performing maintenance

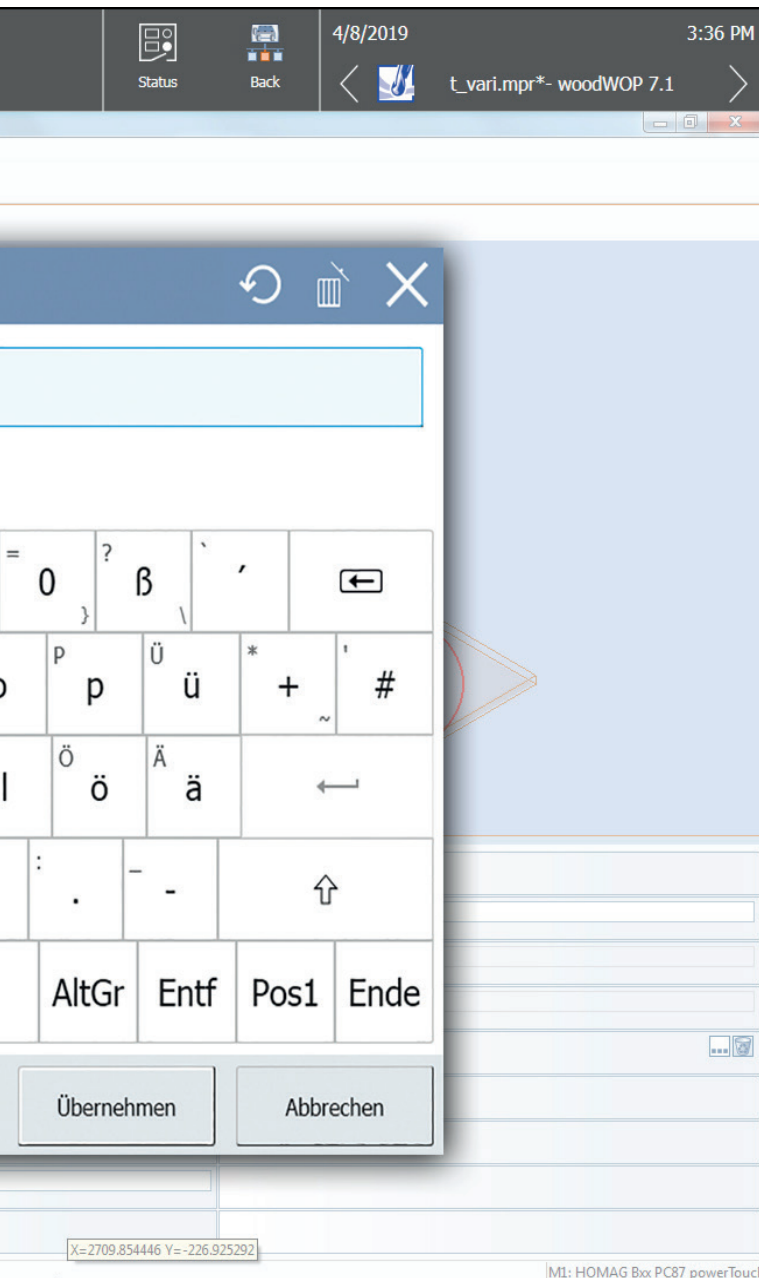


1 The powerTouch2 screen is clearly structured. You can see all the important information at a glance, but you still have all the details.

3 A functional pop-up keyboard that can be kept open, including automatic word completion for faster entries (when you enter the first letters, frequently used applications are proposed and you can select them directly).

2 We have also improved the traffic light dialog further. You can now directly influence the machine's production readiness by selecting actions via the traffic light icon.

4 Enhanced "Start" menu with additional information displayed (e.g. an indication of how many messages are currently pending or status bars that show the progress of the application) and direct access to actions (e.g. confirmation of actions without having to jump to the application).

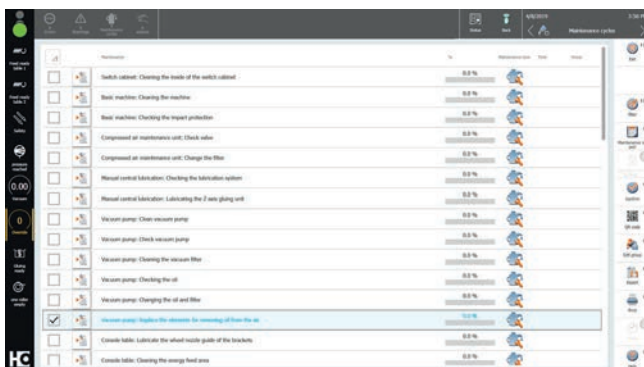


The next generation of powerTouch: **powerTouch2**

Faster, more comfortable, clearer: Enjoy the benefits of our further improved powerTouch user interface. We have optimized our standardized operating concept and further adapted it to our customers' requirements. Controlling your HOMAG machines is now even faster and more intuitive. The new, modern design has a clear structure. The innovative touch operation allows you to achieve the desired result easily and comfortably.

With the new powerTouch generation, you can enter information at your machine even more quickly. Compared to the previous version, you can achieve a time saving of up to 30%. This is possible thanks to new features, such as automatic word completion, a pop-up keyboard that can be kept open and Windows-like functions, such as the selection of common actions directly via the start button.

Our successful powerTouch philosophy – **standardized, simple, ergonomic, evolutionary** – consistently further developed



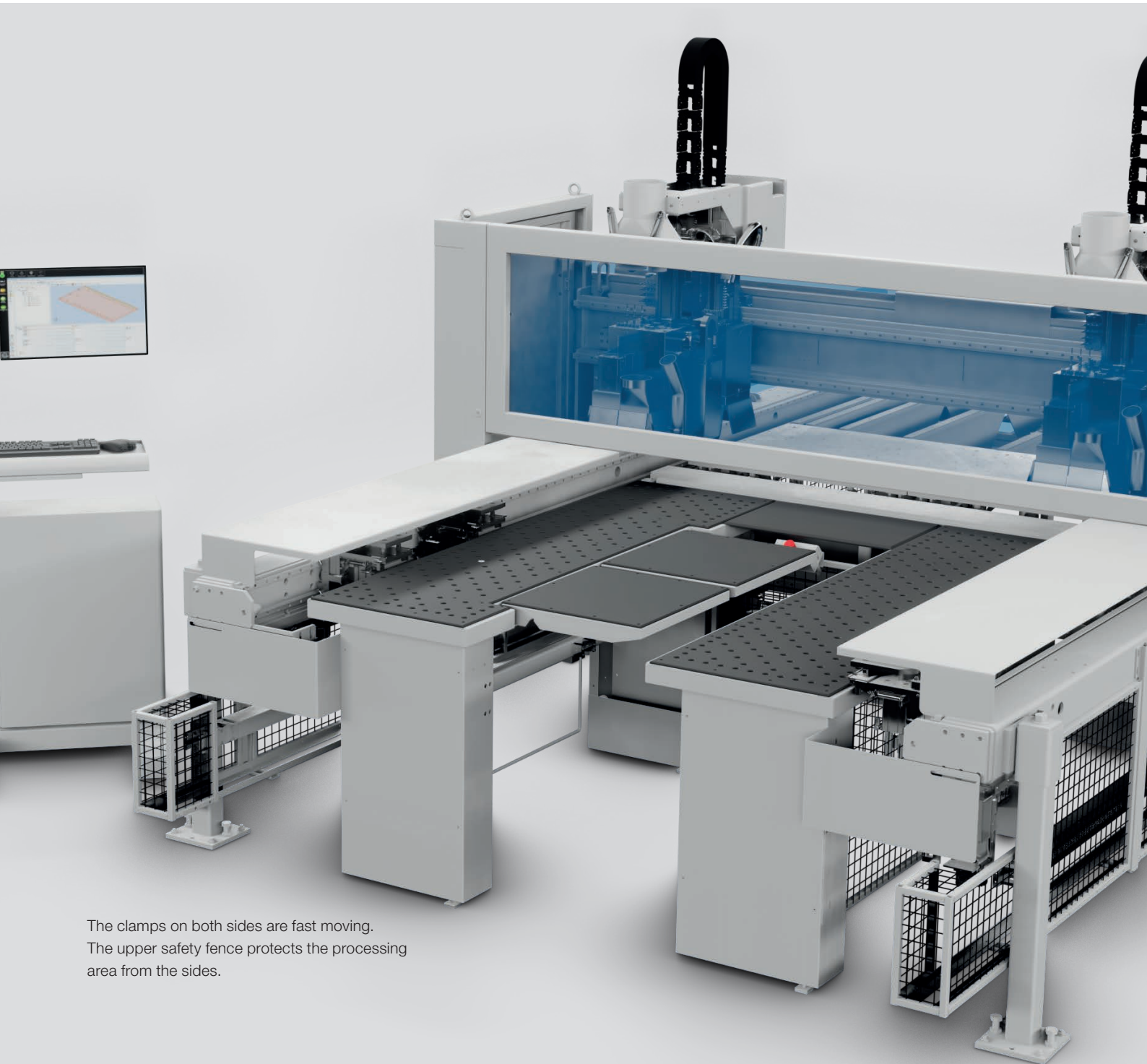
THE HIGHLIGHTS AT A GLANCE:

- Direct and efficient operation, up to 30% faster
- Clearer and more informative thanks to additional information and live illustrations instead of program icons
- New applications for operating and controlling machines and systems (e.g. NCCenter in the PC87 control system on CNC machines or woodCommander 4 on throughfeed machines)
- Fresh, attractive design, based on the new HOMAG machine design

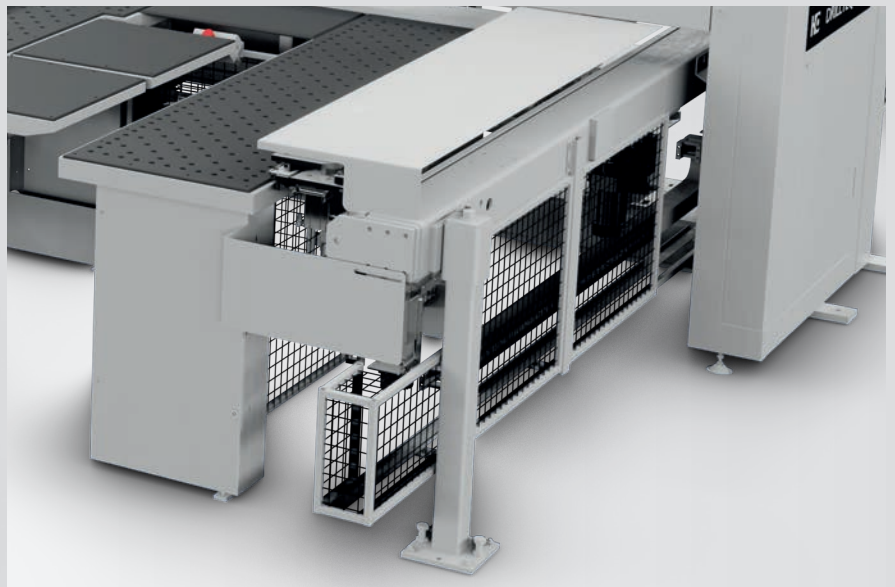
Safety first, because you are important to us!

Comprehensive safety concept

The DRILLTEQ H-308 has a comprehensive safety concept. German standards make working with this equipment not only comfortable, but also safe to handle.



The clamps on both sides are fast moving.
The upper safety fence protects the processing area from the sides.



The lower safety fence prevents entry into the working area.



The Protective cover closed the processing area, to ensure the operator safety during the processing (avoid personal contact with machining tools and moving parts).

HC LIFE CYCLE SERVICES

The sale of our machines comes with all-in optimum service backup and individual advice. We support you with service innovations and products which are especially tailored to your requirements. With short response times and fast

customer solutions we guarantee consistently high availability and economical production – over the entire life cycle of your machine.



REMOTE SERVICE

- Hotline support via remote diagnosis by our trained experts regarding control, mechanics and process technology. Thus, more than 90% less on-site service required and consequently a faster solution for you!
- The ServiceBoard App helps to solve tasks in a fast, simple and concrete way. This is achieved by mobile live video diagnosis, automatic sending of service requests or the online spare parts catalog eParts.



SPARE PARTS SERVICE

- High spare parts availability and fast delivery.
- Ensuring quality by predefined spare parts and wear parts kits, comprising original spare parts.
- Identify and inquire for spare parts online under www.eParts.de 24/7, or buy even faster and more comfortably in the new HOMAG Webshop eCommerce.



MODERNIZATION

- Keep your machinery up to date and increase your productivity as well as your product quality, This is how you can meet tomorrow's requirements today!
- We support you with upgrades, modernization as well as individual consultancy and developments.



DIGITAL SERVICES

- ISN (intelliServiceNet) – The new remote service solution of the future! Fast restart of production because the remote service employee has extensive access to relevant physical data.
- intelliAdvice App – provides help for self-help. The preventive solutions proposed in the new App are the combination of our experiences and existing machine data.



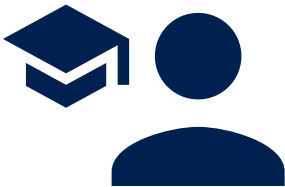
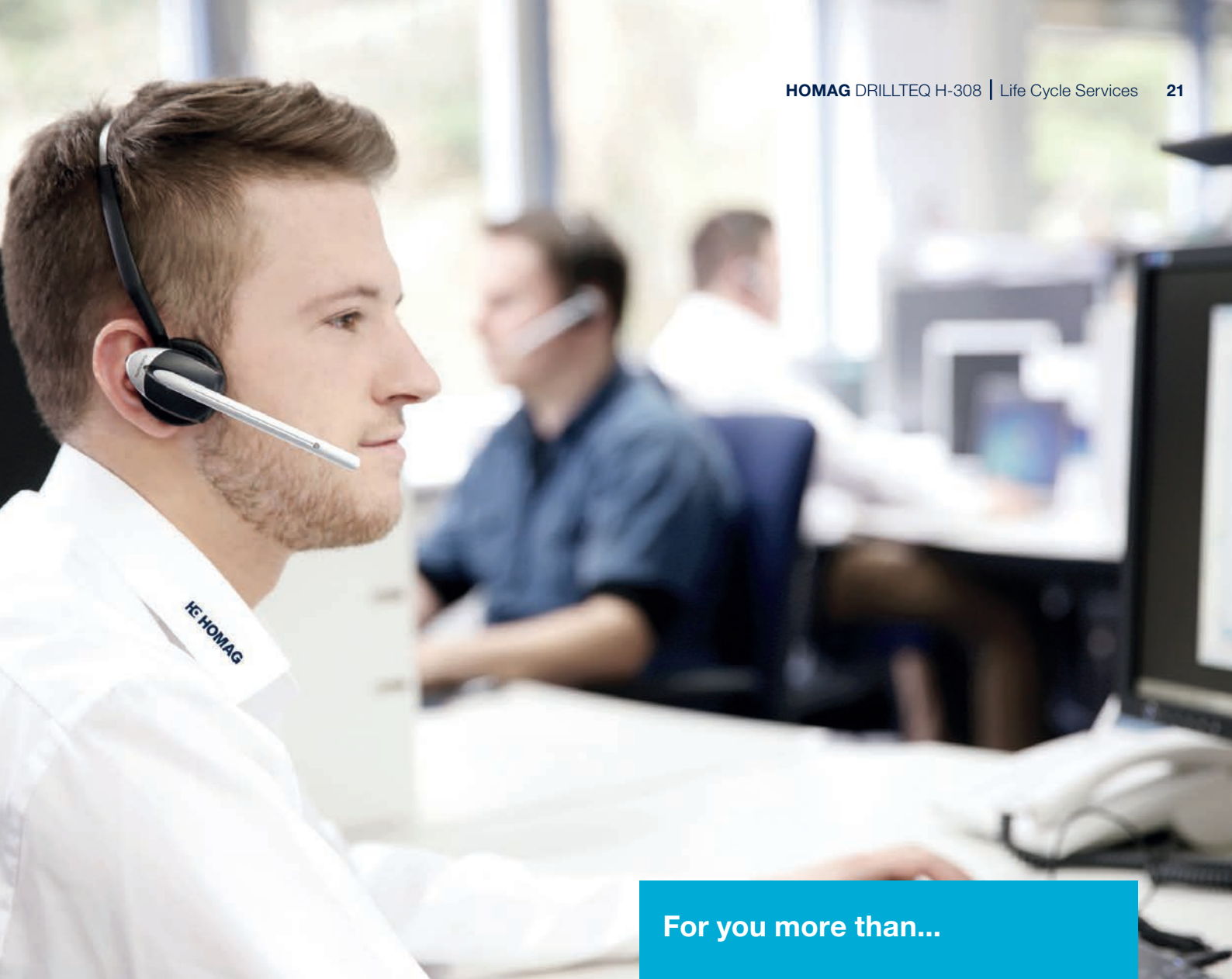
SOFTWARE

- Telephone support and consultancy through software support.
- Digitalization of your spare parts via 3D scanning saves time and money compared to new programming.
- Subsequent networking of your machinery with intelligent software solutions ranging from construction to production.



FIELD SERVICE

- Increased machine availability and product quality by certified service staff.
- Regular checks through maintenance / inspection guarantee the highest quality of your products.
- We offer you the highest availability of technicians in order to reduce downtimes in case of unpredictable troubles.



TRAINING

- Thanks to training perfectly suited to your requirements, your machine operators can optimally operate and maintain the HOMAG machines.
- The training also include customer-specific training documents with exercises proven in practice.
- Online training and webinars. Learn without traveling, meet your trainer in the digital classroom.

For you more than...

1,350

service employees worldwide

90 %

less on-site service thanks to successful remote diagnosis

5,000

customer training sessions per / year

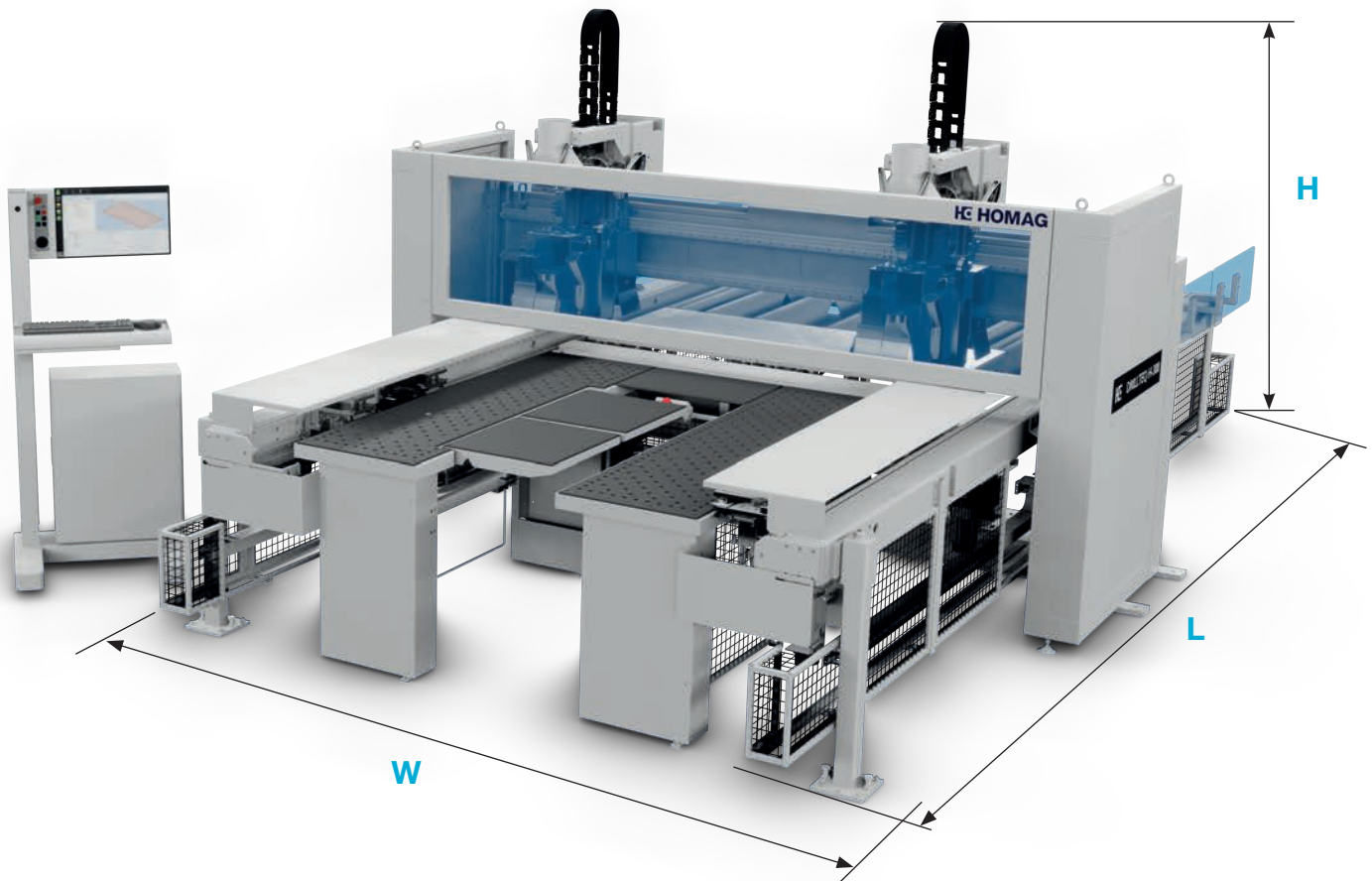
150,000

machines, all electronically documented in 28 different languages – in eParts

Technical data

TECHNICAL DATA		
Footprint without Switch Cabinet		
L	mm	5.910
W	mm	3.900
H	mm	2.530
Workpiece dimension		
Lenght	mm	250 – 2.500 (3.050)
Width (single part)	mm	60 – 1.250
Width (double parts)	mm	2 x 620
Hight	mm	8 – 40
Drilling Head TOP 1 & 2		
vertical spindles	No.	2 x 13
vertical spindle clamping	patented	Yes
horizontal spindles in X+/X-	No.	2 x (3X+/3X-)
horizontal spindles in Y+/Y-	No.	2 x (3Y+/3Y-)
Frequency controlled	RPM	1.250 – 7.500
Drilling Head Bottom 1		
vertical spindles	No.	14
vertical spindle clamping	patented	Yes
Frequency controlled	RPM	1.250 – 7.500

Router		
Frequency controlled	RPM	18.000
Power	KW	3.5
Collet	Type	ER25
Infeed table		
Type		Air-cushion table
Direction	Throughfeed	
Direction	Reserved	
Outfeed table		
Type		Support table
Dust extraction		
Diameter	mm	3 x 160
Electric		
max. connection load	KW	33
Air		
Compressed Air	bar	7
Machine		
approx. weight	KG	4.800



Status 09/22 | Technical changes, print errors and mistakes reserved. Pictures may show special equipment.



HOMAG Group AG

info@homag.com
www.homag.com

YOUR SOLUTION