

Cut Rite

Performance tailored to your needs.
Our Production Solution





Cut Rite – the optimization software for efficient cutting processes

Thousands of companies use the Cut Rite optimization software, with tens of thousands of users in more than 70 countries. The name speaks for itself: Cut Rite transforms slow panel cutting into more efficient processes that reduce time and waste, therefore saving money and increasing profits. The software is compatible with a wide range of machines – from sliding table saws and CNC-controlled pressure beam saws to CNC-machining centers and nested based routers. The heart of Cut Rite is a high performance optimization algorithm which has been continually developed and fine-tuned for more than 40 years! Above and beyond the features already included as standard, you can expand Cut Rite with various modules.

YOUR SOLUTION

CONTENTS

- 04 Process integration
- 05 Software highlights
- 06 Top features
- 10 Modules
- 12 What's included

Perfectly integrated in the overall process

Clearly structured and easy to use – that's Cut Rite's formula for your success. Cut Rite includes all the features that are important for your day-to-day work. On top of this, you can add additional modules and increase the number of licenses. Another advantage: you can automate many steps. This reduces manual operation to a minimum.

01 DATA IMPORT

02 OPTIMIZATION PROCESS

03 CUTTING PATTERN

04 PRODUCTION



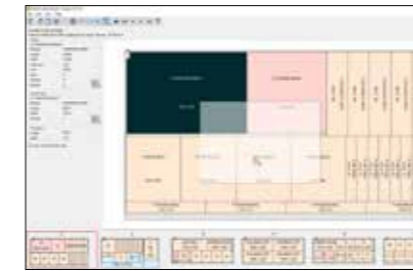
Cut Rite is compatible with all common industry solutions. Parts list tables in PTX, CSV or XLS format can be transferred with all information at the touch of a button.

You set the standards for your cutting process, not the software. Detailed parameter settings allow you to align the optimization results to your specific manufacturing process. All configuration options are graphically visualized, making them easy to find and use.

Reporting options can be configured to your requirements and all the results clearly portrayed. Key figures are instantly available.

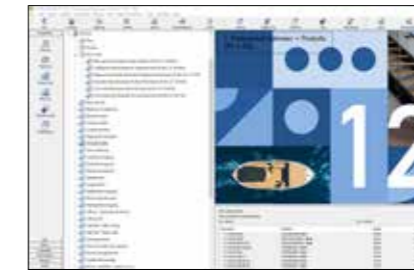
The optimization software supplies both the saw and the nesting machine with data and uses the parts list to identify how you want to produce. You can create the contour elements for single parts as an MPR file (e.g. with woodWOP), transfer DXF data or program data directly into Cut Rite. A simple parts list is sufficient for cutting rectangular components.

Software highlights



Graphic cutting pattern editor

With other programs, you have to start again from the beginning if there is a change to the parts list or if you want to cut an optimized pattern differently. With Cut Rite, you simply grab the mouse and enter the changes directly in the cutting pattern.



User-friendliness is key

Cut Rite has always had an outstanding reputation for ease of use. This is ensured by a modern interface, simple input options and the ability to automate key processes.



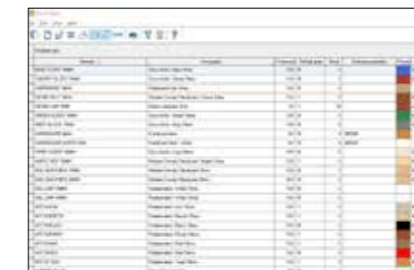
The algorithm: Lightning Fast

Cut Rite's calculating engine uses all your computer's processors. This increases the number of computer operations, achieving optimum results very quickly.



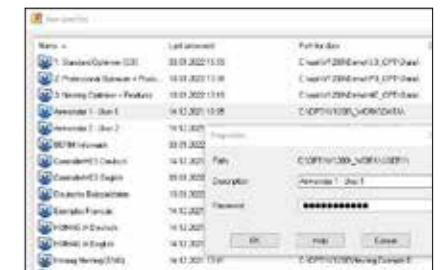
Rules editor for cutting lists

This editor allows you to define rules for data handling and for automatic generation of data specifically to suit your manufacturing process. Important key figures can then be calculated fully automatically in an instant.



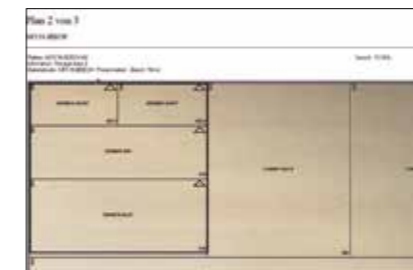
Integrated material database

Here you can set up data for all your panel materials, enter panel usage and register offcuts so that they can be used later. Connection to horizontal storage systems is child's play, thanks to modular extensions.



User profiles

You can create a profile for each user – with password, paths, access rights and much more. All employees can therefore find their way around instantly and use the features they need.



Grain Matched Templates

Templates define the location of components in the cutting pattern – either to achieve a harmonious veneer pattern or to group together narrow components before edging.

Code	Bezeichnung	Menge	Linien	Fläche
Platten	Materialcode			
MANZCARD 40x120	MANZCARD 40x120 2148 9 x 1220 9	7		30 838
SPC-CHP 18x80	SPC-CHP 18x80 2061 8 x 1220 9	10		48 545
CHPSCARD-SUNACT	CHPSCARD-SUNACT 2148 9 x 1220 9	10		44 652
SPC-CHP 18x80	SPC-CHP 18x80 2061 8 x 1220 9	10		30 811
SPC-CHP 18x80	SPC-CHP 18x80 2061 8 x 1220 9	10		30 811
				125 777
Material	Bezeichnung	Menge		
SPC-SUNACT	SPC-SUNACT 2148 9 x 1220 9	10		44 652
SPC-CHP	SPC-CHP 18x80 2061 8 x 1220 9	10		30 811
Material	Bezeichnung	Menge		
SPC-SUNACT	SPC-SUNACT 2148 9 x 1220 9	10		44 652
SPC-CHP	SPC-CHP 18x80 2061 8 x 1220 9	10		30 811
Material	Bezeichnung	Menge		
SPC-SUNACT	SPC-SUNACT 2148 9 x 1220 9	10		44 652
SPC-CHP	SPC-CHP 18x80 2061 8 x 1220 9	10		30 811

Calculating material and machine costs

A big advantage when preparing quotations: Cut Rite immediately indicates the material costs and calculates the machining time. You can therefore calculate each order exactly and benefit from simplified production planning.

Top features for your manufacturing process

We support you with a team of developers and support technicians to ensure that Cut Rite puts you one step ahead. Our update and service contracts give you access to all the latest features, allowing you to extend your lead. Your training is provided by us or by certified partners. This shortens the start-up phase.

CNC programming and linking: Fast setup times for your CNC machines

Use this top feature to streamline your production and to implement seamless, highly efficient and accurate processes. It creates a fully integrated production cell by sending part drawings directly to your point-to-point processing center. Parts are labeled at the saw. The

label includes a bar code for the drawing reference. Scanning at the processing center provides a foolproof and fast process that ensures each part is machined correctly.



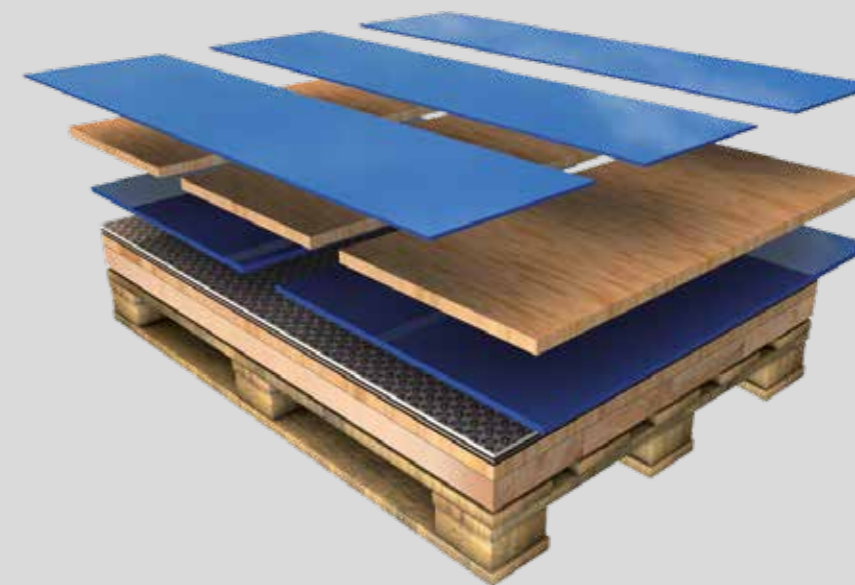
Features and benefits

- The geometry for rectangular or shaped parts can be drawn quickly using the editor, or can be imported from DXF files.
- The machining library holds parametric drawings so that, as the part size changes, the machining instructions are recalculated instantly.
- This top feature offers support for drilling, grooving, contour trimming, processing on both sides of workpieces, vacuum suction unit positions, dimension lines and pockets.
- Details of depths and tooling information can be added for each operation, including tool speeds, tool path compensation and other tool-specific data.
- The data interface allows direct transfer of data to most CNC-controlled machining processing centers via DXF and proprietary formats.
- Labels or route sheets can include the part drawing.
- Processing times can be calculated for each part.
- If used alongside woodWOP, all MPR programs can be used and data from there transferred to the CNC machine.

Destacking*: For efficiency and fast throughput

The excellent "destacking" feature is designed to keep production running smoothly by planning the destacking process and thus improving throughput at the saw. It gives you a list of pallet requirements or a protection board cutting list and, based on the size

of your mechanized destacking stations, will limit the number of open parts. This ensures that finished items go to the assembly department as quickly as possible.



Features and benefits

- A detailed station report provides information for conveying parts to the correct pallets or protection boards in the destacking area.
- This feature calculates a cutting list for baseboards from the part sizes allowing for oversize allowance, layout constraints and maximum stacking height.
- A destacking overview shows the operator, pattern by pattern, which part to place on which pallet.
- The layout of parts on each pallet or protection board can be downloaded to automatic destacking equipment.
- Labels can be printed for stacks or pallets.
- Cut Rite Professional includes an advanced optimization algorithm that considers maximum station sizes when allocating parts to stations.

*Only with Cut Rite Professional

Part library and label printing: For better management and tracking of parts

With this feature you can speed up your production. It allows you to generate all data for your most frequently used parts data in no time at all. Furthermore, you can easily add parts to a parts list by

simply dragging the part code. You can even create all your cutting lists quickly and accurately and generate factory route cards at the press of a button.



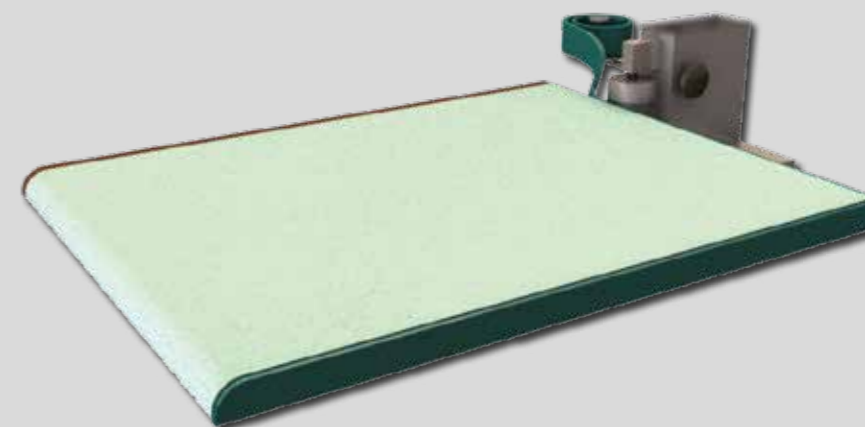
Features and benefits

- The part library can hold details of size, material, grain and edging, as well as plenty of user-defined information for each part.
- You can generate detailed labels with multiple bar codes and graphics — for fast setup of CNC machines equipped with bar code scanners.
- The library also includes a list of regularly used fixtures with prices, if necessary.
- The part dimensions and other fields may be parametric and specified at order entry if required.
- Labels can be printed in cutting sequence in the office or directly at the machine.
- A list of operation times can be held for each part and be used to build up a full part cost.

Edging and laminate calculation: Provides precise calculation of edging and laminate requirements

This feature processes all part measurements in a single step, making your planning a lot easier. Taking the edging into account, it corrects the cut sizes and calculates the sizes and amounts of

laminate and edging material required. The graphic edge material joint information on the label ensures that edges are processed correctly.



Features and benefits

- The edge library contains the description, thickness and cost of all edge and coating materials.
- The edge overview lists the running meters of edge required and the costs of all the materials.
- Laminate size calculations can include allowances and special calculations for postforming edges.
- If you use a production cell, all the edge data can be transferred to the edge banding machine by barcode.
- You get detailed processing times and costs for single-sided and double-sided edge banding machines.
- The edge material joint information provides details of how the corners of components are to be treated, for example, mitered, overlapped or rounded.

Even more possibilities – with powerful modules

Would you like to benefit from other Cut Rite advantages in addition to the actual optimization? Then the following modules are just what you need. Take a look for yourself and discover the possibilities.

Order management and variable parts lists: For fast response times to inquiries and orders

This module helps you create quotations and process orders quickly and easily. The parametric product library allows Cut Rite to detail every order, including all standard or custom products,

parts, fixtures and work processes. You will only need to enter your data once to produce order confirmations, dispatch notes, invoices and a complete calculation of all costs.



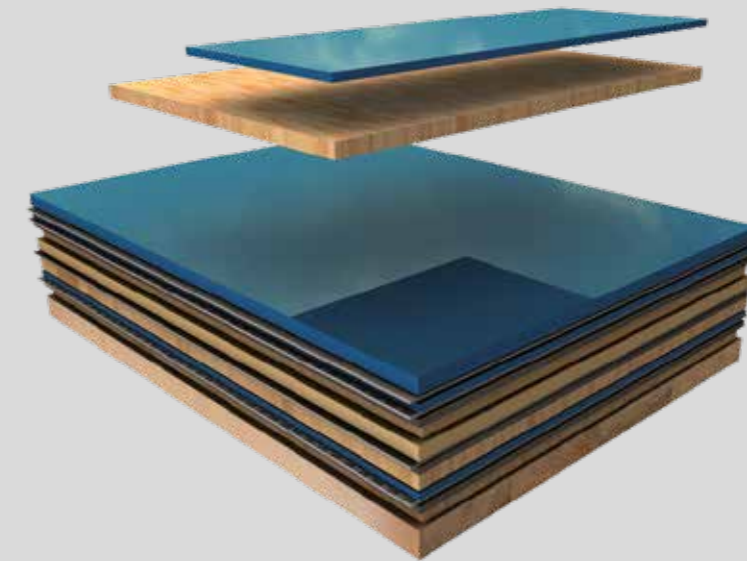
Features and benefits

- Customer database with full contact details, invoicing address, multiple delivery addresses, discounts and free-format notes fields.
- User-defined model variables take account of order-based requirements such as material color and thickness, as well as all fixture options.
- With the flexible form design you can create tailor-made documents that include the company logo, graphics and barcodes. You can select whatever font and positioning you want.
- Use of formulae and user-defined tables enables automatic calculation of component sizes for special cabinets, and allows parametric pricing.
- You can attach image files (BMP, EMF ...) or use Cut Rite's own drawing library to add drawings to your product catalog.
- At the touch of a button, you can obtain a picking list with the calculation of part sizes such as film parts, solid edges or purchased parts.

Storage management: For accurate and efficient inventory management

This invaluable module protects your profit margin by minimizing downtime caused by a shortage of materials. How? By helping you accurately track your raw materials and by adding offcuts back to stock. This ensures no reusable material is wasted, so you

systematically increase material yield. Panels can be allocated to jobs in advance so that you do not optimize the same offcut on different jobs.



Features and benefits

- This module helps you to quickly and easily check stock levels, record raw material orders and book in goods received from your suppliers.
- It considers available free stock (physical stock less allocations) and automatically adjusts stock after cutting.
- Configurable reports include stock valuation, minimum stock levels, monthly summary of stock usage and a log of all stock movements.
- It automatically updates both carrier plate and laminate stock when you laminate complete panels prior to cutting.
- Physical storage management of fixtures and edge material – only in conjunction with the add-on module "Order management and variable parts lists."
- Interface to automatic storage handling systems for synchronization of panel and offcut stock via SQL Server database.

Which Cut Rite edition is right for you?

CUT RITE	Standard	Professional	Nesting
PARTS LIST			
Metric or imperial (inch) dimensions	✓	✓	✓
Grain lengthwise/crosswise/none	✓	✓	✓
Exact quantities or over/under production	✓	✓	✓
Maximum number of part sizes per parts list	20,000	20,000	20,000
Unlimited number of materials per list	✓	✓	✓
Configurable information boxes	99	99	99
Configurable list view	✓	✓	✓
Optimization of parts from the machining library, MPR(X) or DXF programs			✓
IMPORT			
Import of parts lists/cutting lists from CSV or Excel XLS(X)	✓	✓	✓
Import of board lists from CSV or Excel XLS(X)	✓	✓	✓
CUTTING LIST			
Configurable rules for cutting lists and board lists	✓	✓	✓
Different panel dimensions and quantities per optimization	✓	✓	✓
OPTIMIZATION			
Small/medium quantity optimization	✓	✓	✓
Cross cuts only optimizer (worktops etc.)	✓	✓	
Large quantity optimization		✓	✓
Optimization with automatic overproduction		✓	✓
Separating cut optimization		✓	
Optimization with priorities		✓	✓
Nesting methods part by part, common line or stay down			✓
Parameters for cutting pattern complexity	✓	✓	✓
Parameters for saw blade/trimmer and trims	✓	✓	✓
Settings for combiTec and HOMAG recuts unit		✓	
Strip sorting for Power Concept	✓	✓	
Settings for flexTec		✓	
Waste optimization	✓	✓	✓
Total costs optimization (material and cutting)		✓	
Extended computing time and advanced options		✓	
Open stacks limit		✓	
Optimization with parts groups		✓	
Maximum number of part dimensions per optimization	10,000	10,000	10,000
Maximum number of parts per optimization	10,000	any	any
Batch optimization up to 250 lists	✓	✓	✓
Material- and panel-dependent parameters	✓	✓	✓
Templates for continuous grain pattern	✓	✓	✓
EXPORT			
Export summaries to Access	✓	✓	✓
Export summaries to Excel XLS(X)	✓	✓	✓
Export summaries to PDF	✓	✓	✓
Export cutting patterns to DXF	✓	✓	✓

CUT RITE	Standard	Professional	Nesting
SUMMARIES, LABELS AND FORMS			
Batch and run summaries	✓	✓	✓
Parts, boards, material and cutting pattern summaries	✓	✓	✓
Offcut summary	✓	✓	✓
Weight calculation	✓	✓	✓
Graphics and charts	✓	✓	✓
Configurable summaries	✓	✓	✓
Form design for part lists and cutting patterns	✓	✓	✓
Label designer for texts, barcodes and graphics	✓	✓	✓
Labels for parts and offcuts	✓	✓	✓
EDGE AND LAMINATE CALCULATION			
Calculation of unprocessed panel dimensions, cutting sizes and finished sizes	✓	✓	✓
Calculation of edge lengths in meters or units	✓	✓	✓
Graphic display of edge sequence	✓	✓	✓
Calculation of processing time for edging	✓	✓	✓
Determination of quantities and sizes of laminate	✓	✓	✓
Calculation of costs for edges and laminates	✓	✓	✓
Edges and laminates library	✓	✓	✓
STORE			
Board library for unprocessed panels and offcuts	✓	✓	✓
Automatic stock issue optimization	✓	✓	✓
Import of stock adjustment via file	✓	✓	✓
CUTTING PATTERNS			
Graphic cutting pattern preview	✓	✓	✓
Cutting pattern display with color palette or material grain	✓	✓	✓
Cutting pattern editor — manual amendment of cutting patterns	✓	✓	✓
Cutting pattern and template library	✓	✓	✓
Cutting instructions for saw operator	✓	✓	
Simulation view of the milling paths			✓
OTHER FUNCTIONS			
File management — copying and deleting data	✓	✓	✓
Backup and recovery	✓	✓	✓
Integrated help	✓	✓	✓
Link to website/display of available updates	✓	✓	✓
User profiles	✓	✓	✓
Stand-alone batch operation (external call-up of functions)	✓	✓	✓
TRANSFER TO SAW			
Calculation of cutting time	✓	✓	
Interface — single saws	✓	✓	
Interface — angular saw units/multiple saw units		✓	
Interface — CNC machines			✓
Transfer parameters	✓	✓	✓
Saw interface — PTX format	✓	✓	✓
Stress elimination cuts	✓	✓	

HC LIFE CYCLE SERVICES

Improved performance, more efficient processes, faster help, assurance of availability and smarter workin

TEAM & COVERAGE

Largest global service network in the industry with over 1,350 personnel.

INSTALLATION & COMMISSIONING

For a smooth start, we only let proven experts manage your setup.

OPERATION & CONTROL

After teaching your personnel the intuitive control system, our clever apps help to make the operator's life much easier.

MAINTENANCE & SERVICING

To keep things running, we're happy to take a preventative approach. You decide how often and how intensively you want the support to be. As we all know, prevention is better than the cure.

eSHOP & ONLINE ADVANTAGE

A few clicks and it's fixed. Receive exclusive advantages by ordering spare parts online, depending on market availability.
shop.homag.com

HOTLINE & READINESS

When there's an emergency, we're here. Direct by phone, digitally via app or video, or with on-site support. We are close to you with over 90 regional service organizations worldwide. With more than 35,000 spare parts immediately available, we can deliver 85% of your orders fast.

TRAINING & EDUCATION

With classroom, live online or eLearning training, we offer flexible options to help you get knowledge. We conduct over 4,000 customer training courses every year, and we even have our own training centers in 19 countries

MODERNIZATION & IMPROVEMENT

Our modernization program is tailored to your machines and processes. We can evaluate your data and situation and advise you on the next step.

ANALYSIS & SUSTAINABILITY

On request, we analyze all your processes with proven tools and procedures (LeanSixSigma). We have a large, certified team of experts for this purpose.

FINANCING & CONSULTING

We offer you tailor-made financing concepts worldwide. With more than 60 years of experience and a close partner network of prominent banks and insurance companies to help us to find the right solution for you, we're always transparent and reliable in processing.

Fast support:
94% resolution rate
via our hotline

Close to you:
1,350 service experts worldwide

We get things moving:
Over 1,000 worldwide spare parts
shipments each day

No one else has that:
Electronic documentation on over
150,000 machines, available in 28
languages



Images may also show options and are not binding for orders. Subject to change | Cut-File | 02/2022 | E



HOMAG Group AG
info@homag.com
www.homag.com

YOUR SOLUTION